

**FLUORESCENT FIXTURES**

**TRIM TUBE 2000**

TRIM TUBE® 2000 Pendant or bracket mounted luminaire with extruded aluminum body in stove enamel or epoxy, powder coated finish with black/white plastic end caps and suspension rings. The fixture is fitted with polished aluminum reflector and white metal louver. The fixture can be hung with chain or wire suspension. Also available in T5-14W and 28W.



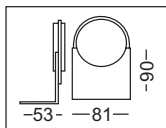
Fixture suitable only for 26 mm Dia Fluorescent Tube

Dia: 26mm

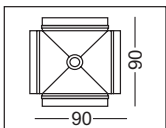
**GRID UNIT**

	<b>Cat. No.</b>	<b>Cat. No.</b>
	<b>14235</b>	<b>14236</b>
Lamp:	FTL-1x18W(C*)	FTL-1x36W(C*)
<b>PENDANT</b>	<b>04EI</b>	<b>04EJ</b>
Lamp:	FTL-1x18W(C*)	FTL-1x36W(C*)
Finish:	01,02	
<b>MIRROR LIGHT</b>	<b>04FA</b>	
Lamp:	FTL-1x18W(C*)	
Length:	645mm	1260mm
Finish:	01,02	

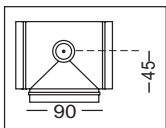
**TRIM TUBE COUPLERS**



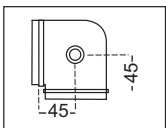
Wall Bracket  
90mm(pair)  
Cat. No.: 91153  
Finish: 01,02



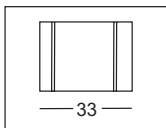
X-Coupler  
Cat. No.: 91230/  
91170  
Finish: 01,02



T-Coupler  
Cat. No.: 91231/  
91171  
Finish: 01,02



L-Coupler  
Cat. No.: 91232/  
91172  
Finish: 01,02



Straight Coupler  
33mm  
Cat. No.: 91233  
91173  
Finish: 01,02

**TRIM TUBE TRACKS**



Track 900/1510mm  
Cat. No.: 71FE/71FF  
Finish: 01,02



ISL  
Cat. No.: 2706  
Finish: 01,02,06



G-hd (S/L)  
Cat. No.: 27CY/ 2799  
Finish: 01,02,06



G-hd (S)  
Cat. No.: 59CY  
Finish: 01,02,06

**TWO LIGHT ACCESSORY**